



GAT MONTHLY MEMBERSHIP PROGRESS REPORT

Results as of: 6/30/2022

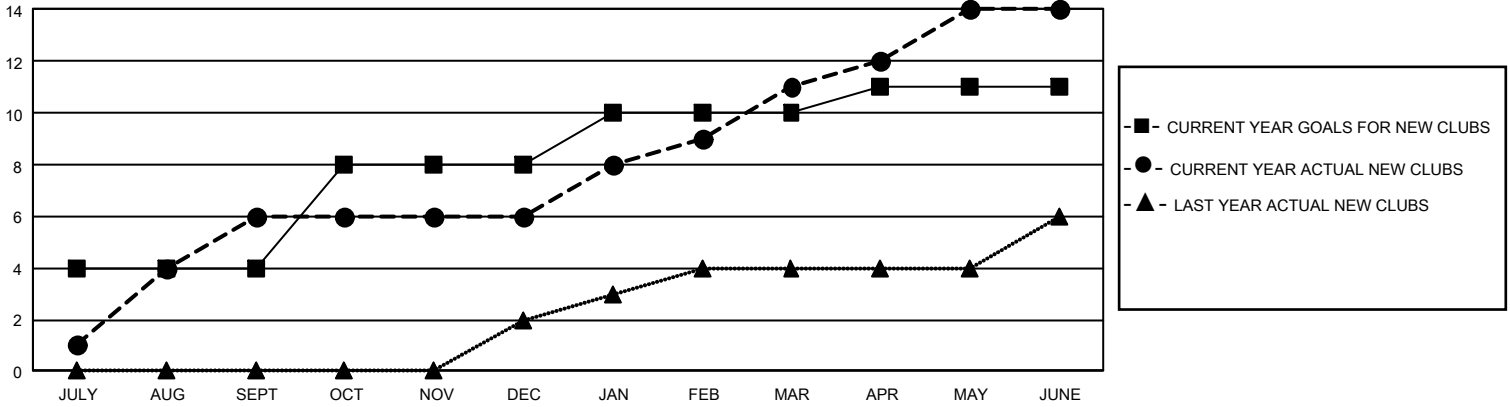
GMT Constitutional Area 5 - E, Group P

REPORT DOES NOT INCLUDE CLUBS IN UNDISTRICTED AREAS.

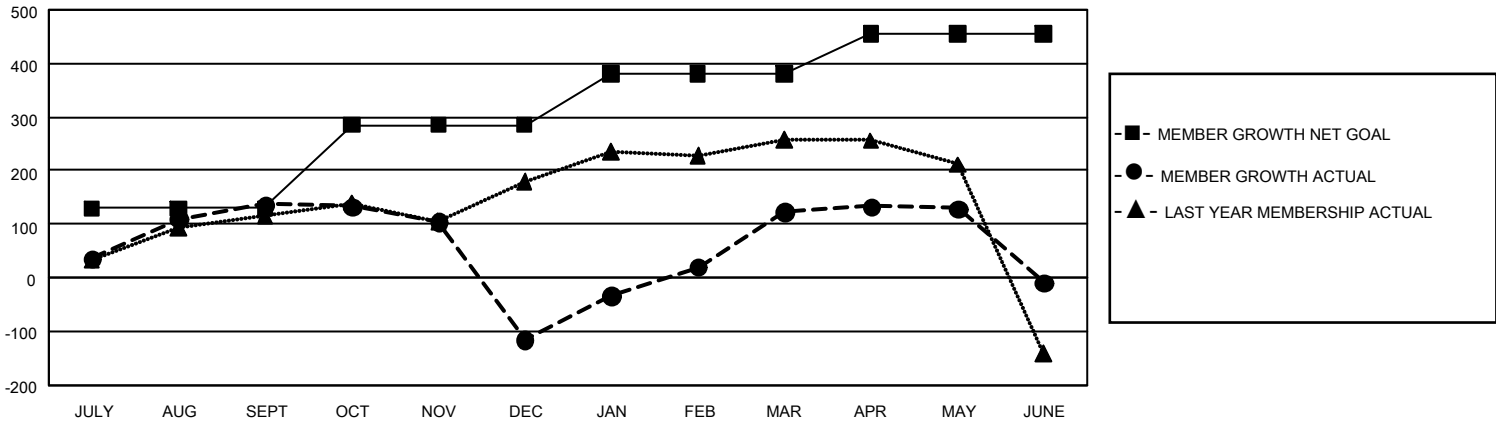
Clubs			
RESULTS FOR 2021-2022			
QUARTER	NEW CLUB GOAL	NEW CLUBS	DROPPED CLUBS
JULY/AUG/SEPT	12	6	1
OCT/NOV/DEC	12	0	2
JAN/FEB/MAR	6	5	1
APR/MAY/JUNE	3	3	2

Members			
RESULTS FOR 2021-2022			
QUARTER	MEMBER GROWTH NET GOAL	MEMBER GROWTH ACTUAL	DROPPED MEMBERS ACTUAL (including transfers)
JULY/AUG/SEPT	130	266	115
OCT/NOV/DEC	155	128	363
JAN/FEB/MAR	95	367	103
APR/MAY/JUNE	75	391	490

GOALS AND ACTUAL NEW CLUBS CUMULATIVE



GOALS AND ACTUAL MEMBERS CUMULATIVE



DROPPED CLUBS: 6	176 CLUBS OF 310 ADDED 1 OR MORE NEW MEMBERS	GENDER DISTRIBUTION	
		MALE 3,615 (49.97%) FEMALE 3,620 (50.03%) NON BINARY 0 (0.00%) PREFER NOT TO ANSWER 0 (0.00%)	
DROPPED MEMBERS		CLICK HERE FOR CUMULATIVE MEMBERSHIP DATA	TOTAL FAMILY UNIT MEMBERS 482
DECEASED 54 CLUB CANCELLED 71 OTHER 946 TOTAL 1,071			FAMILY MEMBERS PAYING HALF DUES 261